



**SUNAPEE LAKE SPIRITUALIST CAMP.**

THIRTIETH ANNUAL  
**SUNAPEE LAKE  
Spiritualist Camp Meeting**

WILL BE HELD AT  
**BLODGETT'S LANDING, N. H.**

*Commencing Sunday August 4,  
and Closing Sunday September 1, 1907.*

Officers of the Association.

President John Gage, Henniker.

Vice-President, I. K. Connor, Warner,

Secretary, John W. Clay, Sutton.

Treasurer, Mrs. Harriet C. Comstock, Newport.

Business Committee.

Thomas Burpee, Sutton.

C. E. Gove, Riverdale.

I. K. Connor, Warner.

Auditors.

C. C. Davis, Hartland, Vt. Mrs. H. G. Newman, Washington, N. H.

## INTRODUCTION.

In presenting this 30th, Camp-meeting program for 1907, it would be incomplete unless we said a word about the beautiful spot we are privileged to hold our meetings. Much has been said and more can be, about Sunapee Lake and its surroundings. It is without question the purest, cleanest water to be found anywhere; Nestled as it is among the hills of New Hampshire, (called the Switzerland of America.) at an elevation of nearly 1200 feet above Sea Level.

Words will not adequately describe this beautiful locality, it must be visited to be appreciated. Blodgett's Landing, is situated on the North East shore of this grand Lake, where our Sunapee Lake Spiritualist Camp-meetings are held, and we invite you to come and join us in expounding the grandest truth of modern times, come and reason with us, and may we not agree with Sir W. Drummond's Philosophy, Wisdom and Liberty, support each other. He who will not reason is a bigot: he who cannot is a fool, and he who dare not is a slave

Sunapee Lake is too well known to the pleasure-seekers of New England, to need any word of introduction, but for the benefit of those who have not visited the locality it may be well to call attention to the location and how to reach Blodgett's Landing.

The Concord and Claremont Division of the Boston and Maine Railroad runs along the south-west shore of this charming lake, with a commodious depot at Lake Sunapee Station. Buy Camp-meeting tickets to Blodgett's Landing, on sale at principal stations along the B. & M. line. Several Steamboats await arrival of trains, taking passengers to all points around the lake. Blodgett's Landing is on the east side and about half way up the lake.

Good hotel accommodations can be secured at the Forest House. Numerous cottages present an attractive appearance, where rooms may be obtained at reasonable rates.

Sunapee Lake is one of the loveliest lakes in the world; nearly 1200 feet above sea level with delightful scenery on all sides of it.

We cordially invite your presence and your co-operation.

### *SERVICES FOR 1907.*

The Management of the Camp-meeting Association has secured the following list of Speakers and Mediums.

Sunday August 4.

10-30 a. m.	Lecture.	Mrs. Emma B. Smith.
1.00 p. m.	Seance in Hall.	" " " "
2-15 p. m.	Lecture.	" " " "

Tuesday August 6.		
2-15 p. m.	Lecture.	Mrs. Emma B. Smith.
Wednesday August 7.		
2-15 p. m.	Lecture.	" " "
7-30 p. m.	Seance in Hall.	" " "
Thursday August 8.		
2-15 p. m.	Lecture.	" " "
	Confereuce.	
Friday August 9.		
2-15 p. m.	Lecture.	" " "
7-30 p. m.	Seance in Hall.	Mrs. A. M. Warren.
Saturday August 10.		
2-15 p. m.	Lecture.	Mrs. Emma B. Smith.
7-30 p. m.	Seance in Hall.	Mrs. A. M. Warren.
Sunday August 11.		
10-30 a. m.	Lecture.	M. A. Whitehead.
1.00 p. m.	Seance in Hall.	Edgar W. Emerson.
2-15 p. m.	Lecture.	" " "
Tuesday August 13.		
2-15 p. m.	Lecture.	" " "
Wednesday August 14.		
2-15 p. m.	Lecture and Tests.	" " "
7-30 p. m.	Seance in Hall.	Mrs. A. M. Warren.
Thursday August 15.		
1.00 p. m.	Ladies' Aid Fair.	
Friday August 16.		
2-15 p. m.	Lecture and Tests to be supplied.	
7-30 p. m.	Seance in Hall.	Mrs. A. M. Warren.
Saturday August 17.		
10-30 a. m.	Annual Business Meeting	
2-15 p. m.	Lecture and Tests.	Edgar W. Emerson.
7-30 p. m.	Seance in Hall.	Mrs. A. M. Warren.
Sunday August 18.		
10-30 a. m.	Lecture, and Tests.	G. W. Cates.
1.00 p. m.	Seance in Hall.	Edgar W. Emerson.
2-15 p. m.	Lecture.	" " "
Tuesday August 20.		
2-15 p. m.	Lecture.	G. W. Cates and Wife.
Wednesday August 21.		
2-15 p. m.	Lecture and tests.	G. W. Cates and Wife.
7-30 p. m.	Seance in Hall.	" " " " "

Thursday August 22.		
2-15 p. m.	Lecture and Tests.	G. W. Cates and wife.
7-30 p. m.	Seance in Hall.	Mrs. A. M. Warren.
Friday August 23.		
2-15 p. m.	Lecture and Tests.	G. W. Cates and wife.
7-30 p. m.	Seance in Hall.	" " " " "
Saturday August 24.		
2-15 p. m.	Lecture. and Tests.	" " " " "
7-30 p. m.	Seance in Hall.	Mrs. A. M. Warren.
Sunday August 25.		
10-30 a. m.	Lecture. and Tests.	G. W. Cates and wife.
1.00 p. m.	Seance in Hall.	Mrs. G. W. Cates.
2-15 p. m.	Lecture and Tests.	G. W. Cates and wife.
Tuesday August 27.		
2-15 p. m.	Lecture.	Thomas Burpee.
7-30 p. m.	Seance in Hall.	Mrs. A. M. Warren.
Wednesday August 28.		
2-15 p. m.	Lecture. to be supplied.	
7-30 p. m.	Seance in Hall.	Mrs. A. M. Warren.
Thursday August 29.		
2-15 p. m.	Lecture.	Thomas Burpee.
	Conference.	
Friday August 30.		
2-15 p. m.	Lecture.	Mrs. Kate R. Stiles.
7-30 p. m.	Seance in Hall.	Mrs. A. M. Warren.
Saturday August 31.		
2-15 p. m.	Lecture.	Mrs. Kate R. Stiles.
7-30 p. m.	Seance in Hall.	Mrs. Stiles and Mrs. Warren.
Sunday September 1.		
10-30 a. m.	Lecture.	Mrs. Kate R. Stiles.
1 00 p. m.	Seance in Hall.	Mrs. A. M. Warren.
2-15 p. m.	Lecture.	Mrs. Kate R. Stiles.

We are pleased to announce that Mrs. Albina Warren of Manchester, will be at the Camp during the Month. Mrs Warren was with us last year, and many people are able and willing to testify to the phenomenal quality of her Mediumship. During her stay in Camp she will Lecture and give tests for the Association and attend to private sittings in which she has been so successful.

## Vocal Music.

The vocal music at all services will be under the direction of Mrs. A. O. Haines, of Manchester, N. H.

## Transportation.

Special arrangements have been made with the Boston and Maine Railroad for Camp Meeting Tickets at reduced rates.

On sale at all stations. Call for Camp-Meeting Tickets for Blodgett's Landing.

Those that visit Camp-meeting at Blodgett's Landing the coming season and would like rooms, can find them at BURPEE'S COTTAGE, Lake Street.



## Woodsum Steamboat Co.

With their Steel Steamers, Armenia White, Kearsarge, Weetamoo and Ascutney,—Officered by experienced men and equipped with latest safety appliances—connect with passenger trains on the Boston & Maine Railroad at Lake Sunapee Station for all points on the Lake. Give your checks to the Steamboat Baggage Master at Lake Station.

A. PERLEY FITCH.  
General Manager.

CHARLES L. MASON.  
General Ticket Agent.

Emma Warne,  
PALMIST.

HILLSBORO BRIDGE,

NEW HAMPSHIRE.

# W. E. NEWMAN,

DEALER IN

KITCHEN FURNITURE, STOVES AND TINWARE,

Heating, \* Plumbing, \* and \* Jobbing.

Main Street, . . . Hillsboro Bridge, N. H.

---

## Mrs. Mary M Brown, *THE DIVINE SCIENCE HEALER,*

Who deals with the finer mental and spiritual forces as applied to healing.

RESIDENCE, HILLSBORO BRIDGE, N. H. Box 215

---

## E. C. Messer & Son,

SUCCESSORS TO A. W. MESSER, OF

BRADFORD, N. H.

Will call with a full line of Fresh and Salt Meats, every Monday, Thursday and Saturday.

TELEPHONE AT MARKET.

---

---

## KIMBALL & ROACH Clothe The Whole Family

**From Head To Foot.**

Orders by Mail Solicited.

MAIN STREET, . . . HILLSBORO BRIDGE, N. H.

## H. C. COLBY,

DEALER IN COAL.

HILLSBORO BRIDGE, . . . . . N. H.

---

## JOHN W. BRADFORD,

DEALER IN

Harness, Saddles, Bridles, Whips, Trunks, Bags.  
Blankets and Robes.

HILLSBORO BRIDGE, . . . . . N. H.

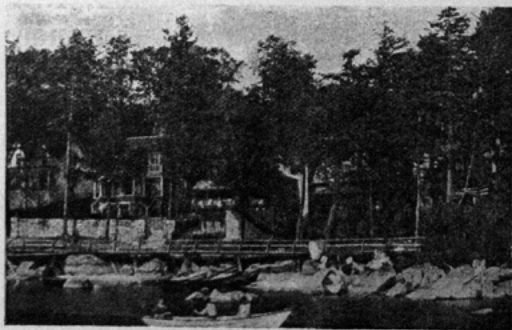
---

## CITY RESTAURANT.

Dinners a Speciality.

HILLSBORO BRIDGE, . . . . . N. H.

---





# For 1907.

Ice Cream, Fresh Cream and Milk will be for sale by W. F. Morgan, after June 15th.

Orders solicited for Ice Cream in large quantities. Give us a call and don't forget the place.

Blodgett's Cottage, Lake Street,  
Opposite Boat Landing,  
Blodgett's Landing, N. H.



F. L. Chase, Sutton, N. H.

Will be glad to supply your needs from his large and up to date stock of fancy and Staple Groceries and General Merchandise.

Teams will take orders and deliver goods three times a week.

Especial attention given mail orders.

Agent for Vermont Bakery Co's Bread, Cake and Pastry.



# THE FOREST HOUSE

Blodgett's Landing, Lake Sunapee.

---

One of the most delightful Summer Resorts in New Hampshire, a Modern Hotel Home with every attraction that nature can provide. Casino unexcelled.

The facilities for Yachting, Rowing, Canoeing and Boating are unsurpassed.

Fishing parties will find this the most central headquarters on the Lake; which is well stocked with Trout, Bass and Salmon.

Every department under competent management. Many improvements under the new Management, including Baths.

Write for booklet. Capacity 100 guests.

A. M. RAND, Proprietor.

ASK YOUR GROCER  
FOR  
PERRY'S PURE FLAVORING EXTRACTS

and accept no other.

Nobody can afford to use extracts that will not bear  
*OUR STATE FOOD LAW INSPECTION.*

Read what our State Chemist says of Perry's Extracts in  
a report dated August 12, 1904:

C. S. PERRY,  
Hillsboro Bridge, N. H.

Dear Sir:

I have analyzed the extracts prepared by you and labeled "Perry's Pure Concentrated Extract of Lemon" and "Perry's Pure Concentrated Extract of Vanilla," and find both products to be of superior quality.

The Vanilla Extract is made from the true Vanilla Bean, and contains a high per cent. of Vanilla,—the essential to a pure extract.

Your Extracts are free from all injurious ingredients and will prove acceptable to those who have found trouble in securing satisfactory flavoring.

Very truly yours,

H. H. BARNARD.

F. L. Chase,  
George G. Wells,  
R. M. Knight,  
Knowlton & Sawyer,  
C. N. Perkins  
C. M. Mann,  
W. M. Carr,

Sutton Mills.  
South Sutton.  
New London.  
George's Mills.  
Sunapee Harbor.  
Newport.  
Bradford.